

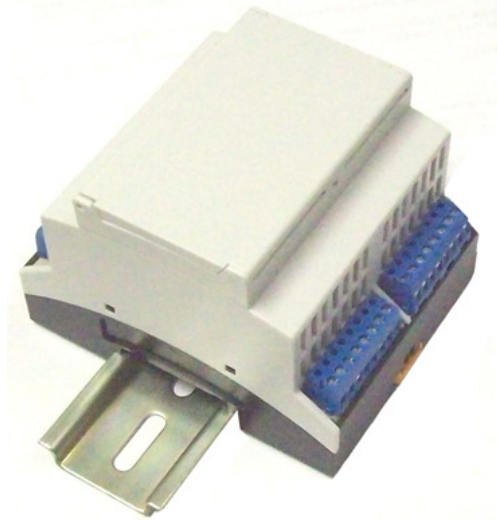
## Dual Proportional Valve Controller Module - DIN Rail Mount PVCM Series

This module is designed for the open loop control of a pressure valve and closed loop control of a flow valve in a hydraulic system.

The range of the command and position inputs is 0 to +10 VDC. The offset and the gain of the command inputs can be adjusted using the onboard potentiometers.

These modules are micro-computer based and may be reprogrammed for your application.

This product is RoHS compliant.



### Features

- Low Cost
- Small Size
- Stand Alone
- Low Weight
- Highly Efficient
- Highly Reliable
- Easily Snaps to the DIN Rail
- Open and Closed Loop Control
- Adjustable Gain and Offset
- Ramp-up and Ramp-down Control
- Optional Ethernet-compatible Port
- Microcomputer Based, May Be Re-programmed for Your Application
- RoHS Compliant
- Pulse Width Modulated (PWM)

### Typical Applications

- Pressure Control Valves
- Flow Control Valves
- Solenoids
- Actuators
- Voice Coil Motors
- DC Motors
- Hydraulics

### General Specifications

- 0 to +10 VDC Command and Position Feedback Inputs
- Supply Voltage, +9 to +50 VDC
- Peak Current, 15 Amp
- Average Current, 4 Amp

### Performance Specifications

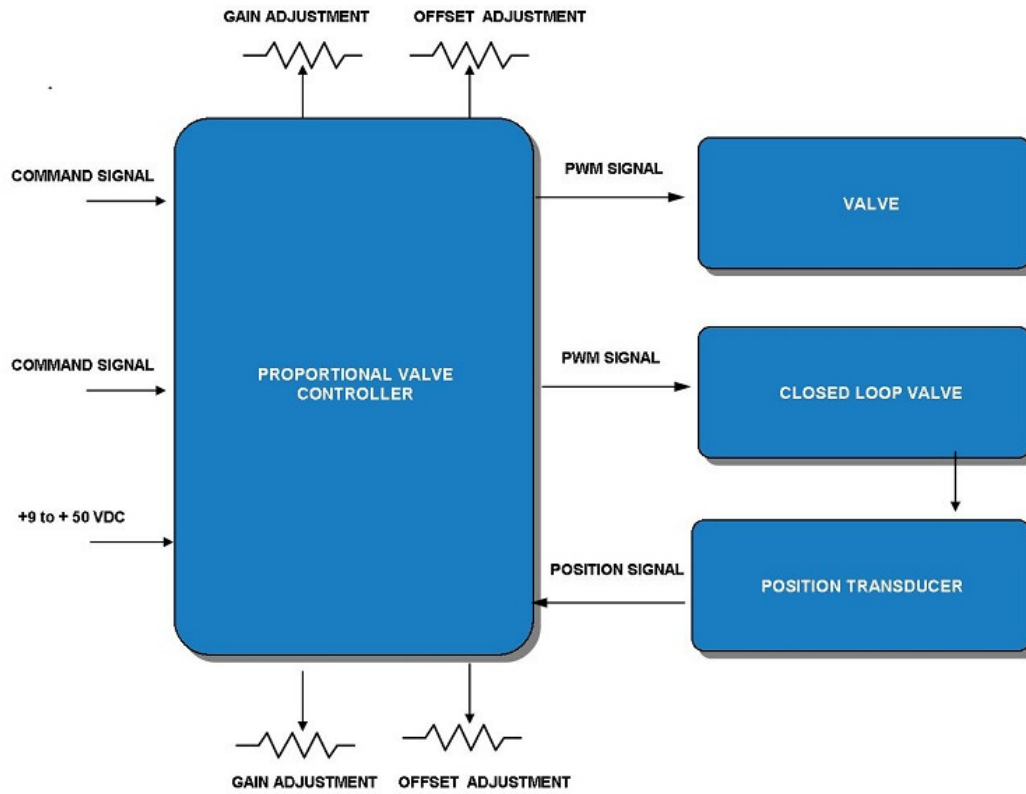
Parameter	Min	Typical	Max	Units
Supply Voltage	9		50	VDC
Peak Current			15	Amp
Average Current			4	Amp
Command Range	0 4		10 20	VDC mAmps
Operating Temperature	0		50	Deg C



**Optimal Engineering Systems, Inc.**  
6901 Woodley Avenue  
Van Nuys, California 91406 U.S.A.  
www.oes-site.com

**Phone (888) 777-1826**  
+1 (818) 222-9200  
FAX +1 (818) 436-0446  
E-mail oes@oes-site.com

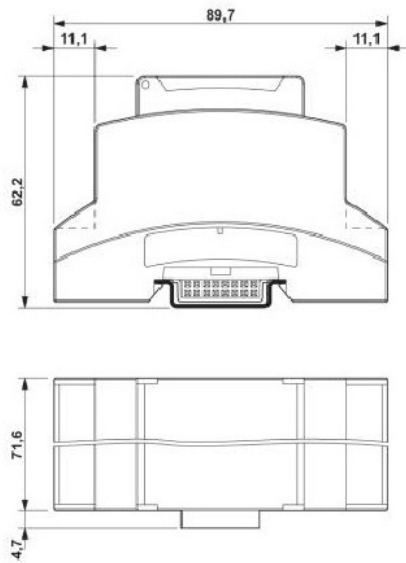
## Block Diagram



Proportional Valve Controller Block Diagram

Copyright © 2010 Optimal Engineering Systems, Inc.

## Mechanical Dimensions



**Optimal Engineering Systems, Inc.**  
 6901 Woodley Avenue  
 Van Nuys, California 91406 U.S.A.  
 www.oes-site.com

**Phone (888) 777-1826**  
 +1 (818) 222-9200  
 FAX +1 (818) 436-0446  
 E-mail oes@oes-site.com